



[BUSINESS](#) | [GROWTH & DEVELOPMENT](#) |

Pacific Gate: Naming contest winner to get \$5,000

41-story downtown condo tower heading to completion in 2017

• By [Roger Showley](#) | 5 p.m. July 17, 2015



The top of the Pacific Gate condo tower resembles a seashell. — *Kohn Pedersen Fox and Chris Dikeakos Architects*

--	--	--	--	--	--	--

Downtown's newest condo tower has a name: Pacific Gate.

Bosa Development announced Kevin Flanagan as the winner Friday of the \$5,000 prize to name the 41-story, 216-unit project under construction south of Broadway at Pacific Highway.

"We feel Pacific Gate represents our vision for the building," said company president Nat Bosa, "being a symbol for the city's future, punctuating the skyline with its iconic architecture and leading the ambitious movement toward an even more dynamic downtown."

Flanagan is out of town and was not available to explain how he came up with the name. Company officials said he has lived in San Diego for more than 30 years and resides just across from Balboa Park.

Designed by the team of Kohn Pedersen Fox and Chris Dikeakos Architects, the building features a top that resembles a seashell. About 16,000 square feet of retail space is planned at the ground floor. Completion is expected in the summer of 2017.

This is the first time Bosa has asked the public to name one of his projects, which include Legends, Discovery and the two-tower Grand at Santa Fe Place.

Even as construction began earlier this year, Bosa applied for approval for a twin tower on the north side of Broadway designed by the same architectural team. It would rise 45 stories and contain 296 units. A spokeswoman said the name for the second tower has not been set.

Pacific Gate

The towers sit on land previously owned by the Atchison, Topeka & Santa Fe Railway that was spun off into a separate development company which still owns the depot.

"Pacific Gate" resembles the name of another project planned to the west. That is Pacific Gateway, proposed by former Union-Tribune Publisher Doug Manchester on the Navy Broadway Complex between Pacific Highway and Harbor Drive and from Broadway to G Street. Litigation has delayed construction of the office and retail complex.

1. Pacific Gate (under construction);
2. Broadway & Pacific (proposed);
3. Pacific Gateway (approved).





Newly named Bosa Development building, Pacific Gate, due to open in the summer of 2017. — *Kohn Pedersen Fox and Chris Dikeakos Architects*



Roger Showley

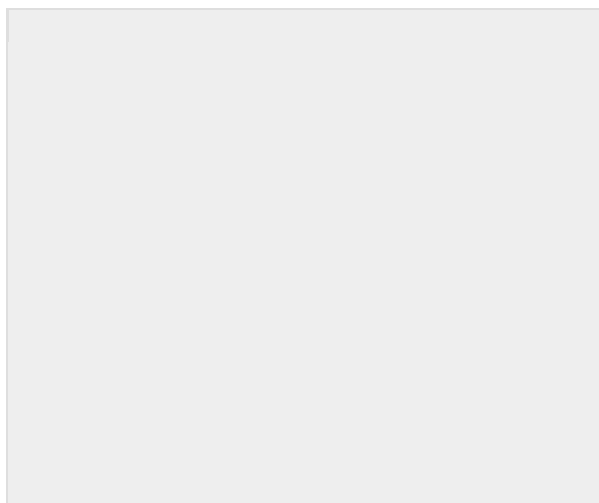


More from Roger Showley

- [Balboa Park: The 100th memory](#)
 - [Pacific Gate: Naming contest winner to get \\$5,000](#)
 - [Wesley Palms: Getting ready for NextGen retirees](#)
-

Comments

BE RELEVANT, RESPECTFUL, HONEST, DISCREET AND RESPONSIBLE. [COMMENTING RULES](#)



TOP STORIES



Border rules on children not always followed



From lab bench to hospital bedside, faster



What's behind UCSD, USC court battle?



No sun, but plenty of Pride



Descendant fighting for art stolen in WWII

MOST POPULAR

Admiral loses star in 'Fat Leonard' scandal

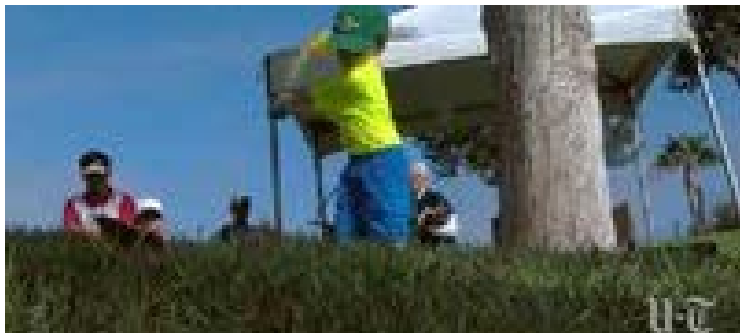
Liberty Station food hall project has signed up nearly a dozen food vendors.

Rain drenches San Diego for second day

Goldsmith lets loose on Chargers' Fabiani

Kyle Emanuel had spring Chargers hoped

POPULAR VIDEOS



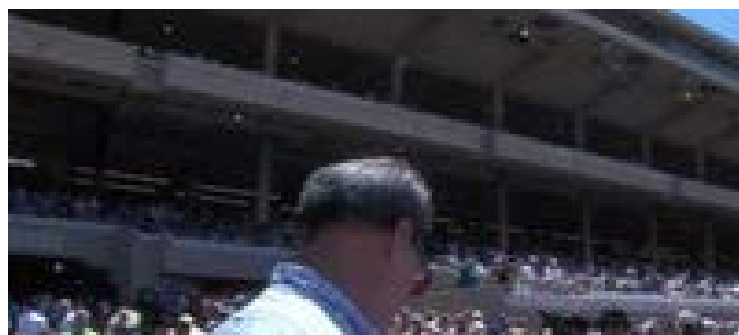
Baby James Golfing in San Diego



Business Report



San Diego Pride Youth Marching Band



Sights and Sounds of Opening Day



Business Report



Matthew Doyle golfing through pain



- About +
- Contacts, Service +
- Advertising +
- Games +
- Terms & Privacy +

Sign Up For Email Alerts

[>> Find out more](#)

Connect With The San Diego Union-Tribune

